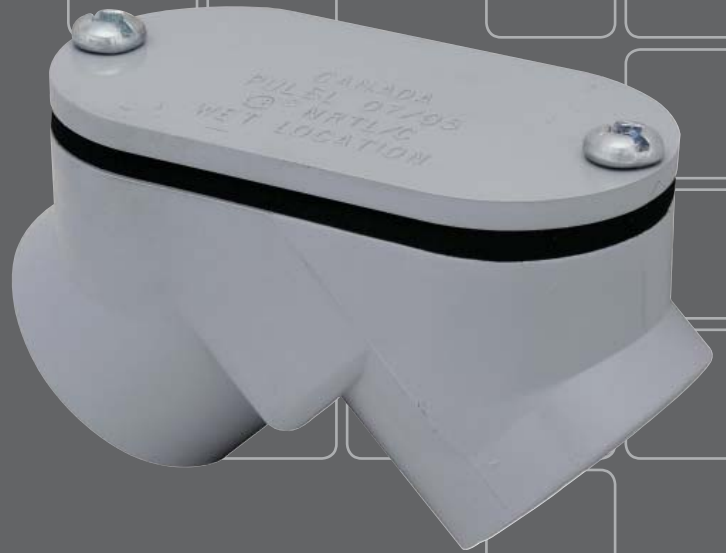


40

pvc fittings



Not all PVC fittings are created equal. Use Madison's PVC fittings once and you will understand why. Made from quality materials and UL tested, our PVC fittings perform every time. With a wide array of products, Madison has the size and shape you need. No matter what the project is, choose Madison PVC fittings for superiority and affordability.



The logo for Madison Electric, consisting of the letters "ME" in a bold, white, sans-serif font.

PVC FITTINGS

PVC COVER PLATES

Covers wiring devices inside box after installation

Material: PVC

Certifications: UL Listed



ITEM#	TRADE SIZE	COVER	INNER QTY	MASTER QTY
PBDC	2 GANG	BLANK W/GASKET	N/A	20
PBSC	1 GANG	BLANK	N/A	50
PBSC-2	2 GANG	BLANK	N/A	50
PDSC	1 GANG	DUPLEX	N/A	100
PGFSC	1 GANG	W.P.GFI	N/A	20
PTSC	1 GANG	TOGGLE	N/A	100

PVC WEATHERPROOF COVERS

Forms weatherproof seal for wiring devices inside PVC boxes

Material: PVC, Neoprene Gasket

Certifications: UL Listed



ITEM#	TRADE SIZE	COVER	INNER QTY	MASTER QTY
PVSD-20	2 GANG	COMBO SWITCH DUPLEX	N/A	10
PVTC-15	1 GANG	TOGGLE SWITCH	N/A	20
PVTC-20	2 GANG	TOGGLE SWITCH	N/A	10
PWDRC	1 GANG	DUPLEX	N/A	20

PVC 2-HOLE STRAPS

Secures conduit to surface

Material: PVC



ITEM#	TRADE SIZE	INNER QTY	MSTR. QTY	ITEM#	TRADE SIZE	INNER QTY	MSTR. QTY
PS-50	1/2"	100	400	PS-200	2"	25	200
PS-75	3/4"	100	400	PS-250	2-1/2"	N/A	100
PS-100	1"	100	500	PS-300	3"	N/A	100
PS-125	1-1/4"	50	400	PS-400	4"	N/A	50
PS-150	1-1/2"	25	225	PS-500	5"	N/A	10

PVC SERVICE ENTRANCE HEADS

Caps overhead service entrance

Material: PVC

Certifications: UL Listed (except for PMH-350)



ITEM#	TRADE SIZE	INNER QTY	MSTR. QTY	ITEM#	TRADE SIZE	INNER QTY	MSTR. QTY
PMH-50	1/2"	N/A	25	PMH-200	2"	N/A	4
PMH-75	3/4"	N/A	20	PMH-250	2-1/2"	N/A	2
PMH-100	1"	N/A	15	PMH-300	3"	N/A	2
PMH-125	1-1/4"	N/A	10	PMH-350	3-1/2"	N/A	2
PMH-150	1-1/2"	N/A	4	PMH-400	4"	N/A	2

PVC BASE SPACERS

Used with intermediate spacers to provide uniform spacing between the rows and columns of conduits for below grade duct bank applications

Material: PVC



ITEM#	TRADE SIZE	INNER QTY	MSTR. QTY	ITEM#	TRADE SIZE	INNER QTY	MSTR. QTY
PBS-200200	2" x 2"	N/A	150	PBS-500150	5" x 1-1/2"	N/A	140
PBS-200300	2" x 3"	N/A	100	PBS-500200	5" x 2"	N/A	60
PBS-300300	3" x 3"	N/A	80	PBS-500300	5" x 3"	N/A	50
PBS-400200	4" x 2"	N/A	80	PBS-600300	6" x 3"	N/A	40
PBS-400300	4" x 3"	N/A	60				

PVC INTERMEDIATE SPACERS

Used with base spacers, to provide uniform spacing between the rows and columns of conduits for below grade duct bank applications

Material: PVC

Features: Rebar holder slots accommodate a maximum rebar diameter of 5/8" for the 2" conduit size, and 7/8" for all other sizes. Spacers provide a 3" clearance from the trench base to the bottom of the first conduit.

Notes: Install spacers every 5 to 6 feet for proper and even support of the conduit assembly.



ITEM#	TRADE SIZE	INNER QTY	MSTR. QTY	ITEM#	TRADE SIZE	INNER QTY	MSTR. QTY
PVS-200200	2" x 2"	N/A	200	PVS-400300	4" x 3"	N/A	60
PVS-200300	2" x 3"	N/A	150	PVS-500300	5" x 3"	N/A	60
PVS-300300	3" x 3"	N/A	160	PVS-600300	6" x 3"	N/A	40
PVS-400200	4" x 2"	N/A	80				

PVC CLEANER

Used to clean and prep PVC pipe and fittings prior to cement application



ITEM#	TRADE SIZE	INNER QTY	MASTER QTY
P-7001	1/2 PINT	N/A	24
P-7002	PINT	N/A	12
P-7003	QUART	N/A	12

PVC SOLVENT CEMENT CLEAR - REGULAR BODY

To cement and form a waterproof seal at joints of PVC pipe



ITEM#	TRADE SIZE	INNER QTY	MASTER QTY
P-6001	1/2 PINT	N/A	24
P-6002	PINT	N/A	12
P-6003	QUART	N/A	12
P-6004	GALLON	N/A	6